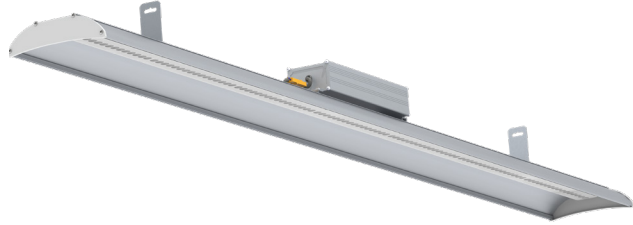


# Linear Highbay



IP40/20



## Product information

The Tungstram Linear High bay is a simple LED solution which efficiently illuminates work areas, creating a brighter and better warehouse, retail or manufacture environment. With its two optical design and energy efficiency, this easy-to-install and low-maintenance lighting solution is suitable for a variety of applications.

## Benefits

- High energy savings up to 50% comparing to TL-5 Highbay
- Direct replacement of T5 Highbay
- Functional, linear design with flexible installation
- Affordable solution for retrofit or new installations
- Reduced replacement and maintenance costs

## Features

- Efficiency up to 110 lm/w
- 50 000 hours lifetime (L70)
- Nominal Voltage: 220-240V
- Operating frequency: 50/60Hz
- Available in two lumen output versions up to 12000lm (with duplicator kit up to 24000lm)
- CCT 4000K
- Color rendering index: CRI 80+
- Beam angle: 100° as default, easily replaceable 50° plastic optic optional - can be ordered as accessory
- Duplicator kit mounting two fixtures to each other for higher lumen output is optional - can be ordered as accessory
- Operation temperature: -20°C to +45°C
- IP40 protection for optical part / IP20 for driver
- IEC protection Class I

## Fixture structure

- Grey color extruded aluminium housing for good heat dissipation and acrylate lenses
- Tested for glow wire at 650°C
- Suspension kit included in package
- Duplicator kit for higher lumen package

## Application areas



Warehouse/  
Distribution center/  
Factory



Sporthall/  
Other high ceiling indoor applications

## Specification summary

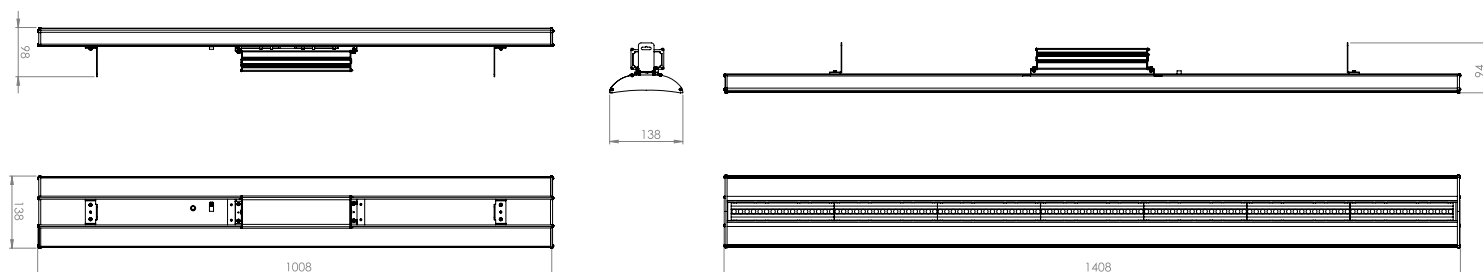
Product Code	Product Code (DS)	Description	Lumen (lm)	Wattage (W)	Efficacy (lm/W)	CCT (K)	IP rating (optical)	IP rating (driver)	Control	CRI
93110385	93113230	LED Linear HighBay G1 TU 4ft 75W 840	8250	75	110	4000K	IP40	IP20	No	80+
93110756	93113231	LED Linear HighBay G1 TU 5ft 110W 840	12100	110	110	4000K	IP40	IP20	No	80+

Adjustable accessories\*

93113202	TBD	LED Linear HighBay G1 TU 50°Lens 5 pcs
93113203	TBD	LED Linear HighBay G1 TU 50°Lens 7 pcs
93114138	TBD	LED Linear HighBay Duplicator Kit

\*accessories to be ordered separately

## Dimensions (mm)



Model	Fixture (incl driver)	Driver	Weight incl driver (kg)
LED Linear Highbay G1 TU 4ft xxx	1008x138x98mm	210x65x40mm	2.0
LED Linear Highbay G1 TU 5ft xxx	1408x138x98mm	210x65x40mm	2.2

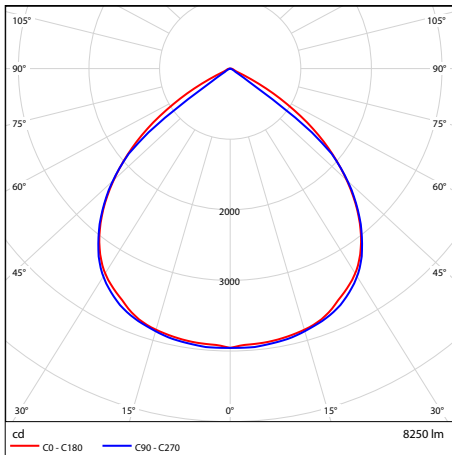


## Ordering information

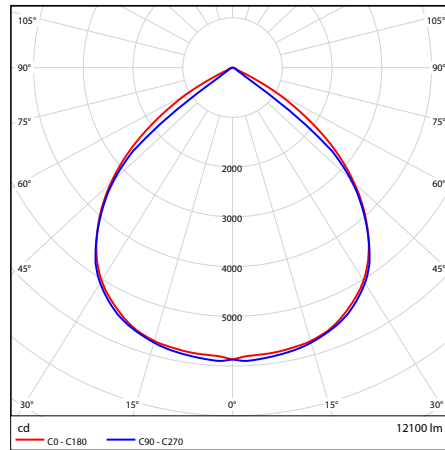
Internal Code	Generation	Brand	Length	Wattage	CRI	CRI + CCT	Shipment
LED Linear Highbay	<b>G1</b> - Generation 1	<b>TU</b> - TUNGSRAM	<b>4ft</b> - 1000mm <b>5ft</b> - 1400mm	<b>75W</b> <b>110W</b>	<b>8</b> - 80 CRI	<b>40</b> - 4000K	<b>DS</b> - Direct Shipment

**Example:** LED Linear HighBay G1 TU 4ft 75W 840 - 4000K CCT 75W Linear Highbay with 100° optic, CRI 80+

## Photometric data



75W 4000K



110W 4000K

Photometry is based on LM79

## Regulatory and standards

**Regulatory mark:** CE

**Regulations:** 2014/35/EU, 2014/30/EU, 2011/65/EU, (framework 2009/125/EC) EU/1194/2012 amended by EU 2015/1428, (framework 2010/30/EC) 874/2012 and 518/2014\*, 2012/19/EU\*

**Harmonised standards:** EN 60598, EN 62493, EN 61547, EN55015, EN 61000, refer to CE Declaration of Conformity and Technical File for details

Photobiological risk assessment group 1. The product is considered safe, does not pose any photobiological hazard

\*not on DOC